



Fietsroute Groenmetropool

 **Cycle route**
→ **94.9 km**

Start- and endpoint

Kasteel Doenrade,
Limpensweg 20 te Doenrade

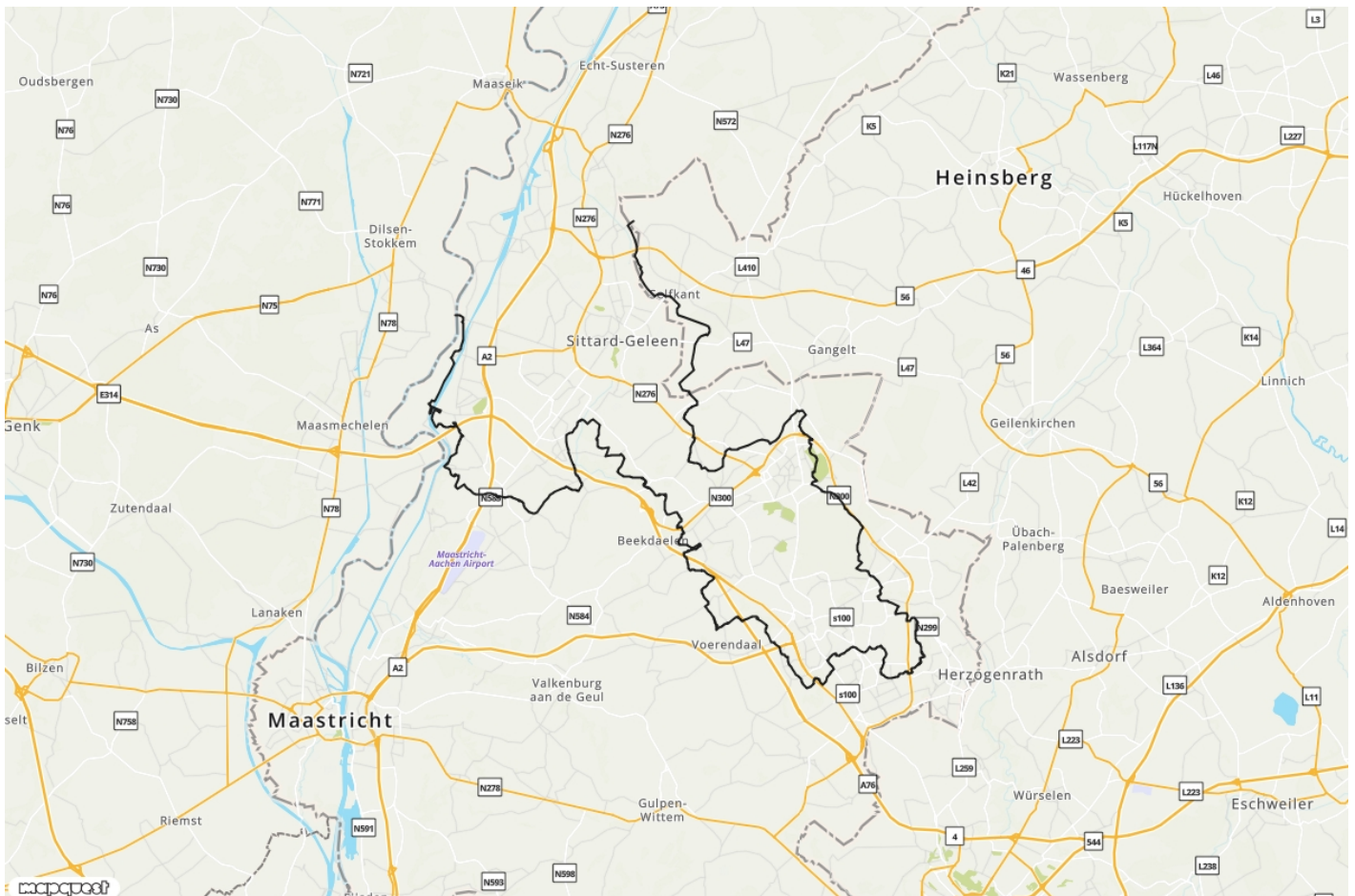
Level of difficulty

Gemiddeld

The area of the 'Grünmetropole' (green metropolis) stretches from Beringen (B) in the West to Heerlen (NL) and Düren (D) in the East. This region is one of the oldest coalmining areas in Europe. For centuries, the landscape was dominated by the coal industry. But also after the coal era, this area appears to be borderless and the challenge to give shape and substance to the 'black to green' transition, proves to be a binding factor.

To emphasize the solidarity within the Grünmetropole, two recreational routes have been developed: the Grünmetropole Cycle Route and the Grünmetropole Car Route. These routes connect more than 70 sights and scenic and recreation areas.

Read more online



Discover many more itineraries on visitzuidlimburg.nl/routes